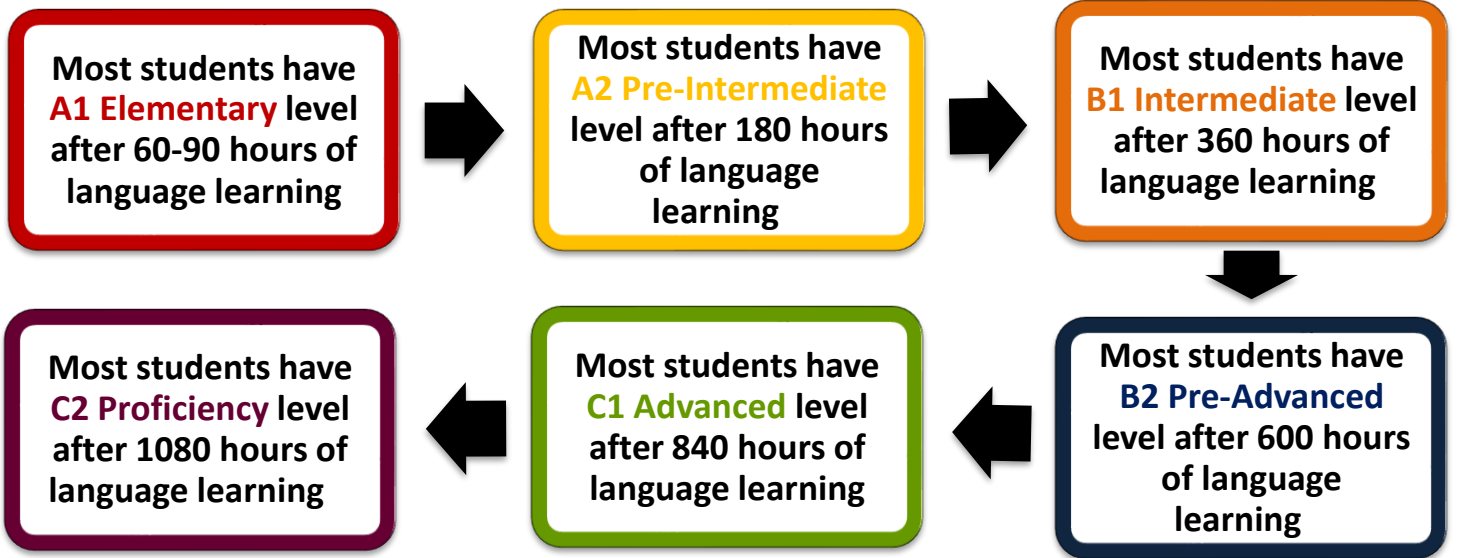
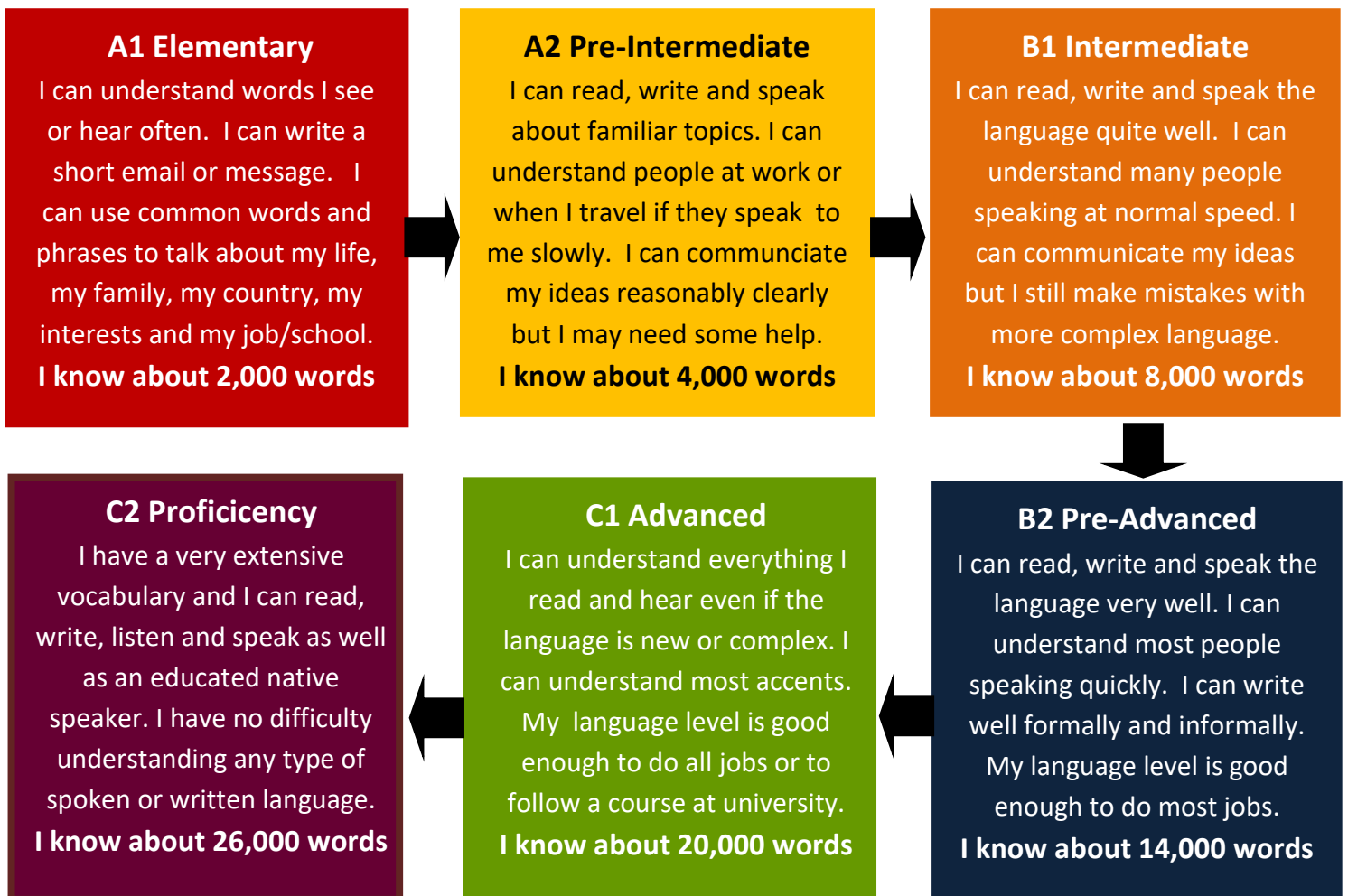


Our levels system is based on the **Common European Framework of Reference for Languages (CEFR)**, the **Council of Europe's** level's system for proficiency in a 2nd language.



What is the difference between the levels?

A level in a 2nd language depends on what you can do in that 2nd language. Your speaking, listening, reading and writing skills are assessed. This is what most learners can do **at the end of** each level:



YOUNG LEARNERS		ADULT LEARNERS	WHAT LEVEL SHOULD I DO?	LEVELS	EXAMS
Starter		A1.1 Elementary	You can do this level if you are starting from the beginning	A1 Your level is basic	DELE A1 DELF A1 CELI A1 Goethe Zertifikat A1
Junior 1	1st Year	A1.2 Elementary	You can do this level after 30 hours of language learning		
Junior 2		A1 Refresher	You can do this level after 60 hours of language learning		
Junior 3	2nd Year	A2.1 Pre-Intermediate	You can do this level after 90 hours of language learning	A2 Your level is ok	DELE A2 DELF A1 CELI A2 Goethe Zertifikat A2 KET IELTS: 3-3.5
Junior 4	Junior Certificate	A2.2 Pre-Intermediate	You can do this level after 120 hours of language learning		
		A2 Refresher	You can do this level after 150 hours of language learning		
Transition Year / 5th Year		B1.1 Intermediate	You can do this level after 180 hours of language learning	B1 Your level is good	DELE B1 DELF B1 CELI B1 Goethe B1 PET BEC P IELTS: 4-5.5
Leaving Certificate O		B1.2 Intermediate	You can do this level after 270 hours of language learning		
Leaving Certificate H		B2.1 Upper-Intermediate	You can do this level after 360 hours of language learning	B2 Your level is very good	DELE B2 DELF B2 CELI B2 Goethe B2 FCE BEC V IELTS: 6-6.5
Third level Year 1		B2.2 Pre-Advanced/First	You can do this level after 480 hours of language learning		
Third level Year 2		C1.1 Advanced	You can do this level after 600 hours of language learning	C1 Your level is excellent	DELE C1 DELF C1 CELI C1 Goeth C1 CAE BEC H IELTS: 7-8
Third level Year 3		C1.2 Advanced	You can do this level after 720 hours of language learning		
Third level Year 4		C2.1 Proficiency	You can do this level after 840 hours of language learning	C2 Your level is native-like	DELE C2 DELF C2 CELI C2 Goethe C2 CPE IELTS: 9
		C2.2 Proficiency	You can do this level after 960 hours of language learning		